



Greenway, Totteridge, N20 8EH  
£1,550,000 Freehold Council Tax Band G

**REAL ESTATES**  
Est.1981

Estate Agents · Residential Sales · Investments · Lettings

**SOLD OFF MARKET-** This well presented 4 bedroom detached family home with further potential to extend to the rear and loft if required (stpp).

The property measures approx 1600 sq ft (including garage) and comprises a front aspect fitted kitchen, 2 spacious reception rooms with doors leading onto the SOUTH-FACING rear garden, study with access to the garage which has been partly converted to provide a gym/utility room. To the 1st floor there are 4 bedrooms and 2 bathrooms (1 en suite). A large driveway provides off street parking for a number of cars.

Greenway is located off Totteridge Green, within close proximity to Totteridge open space and convenient for Totteridge & Whetstone Northern Line tube station as well as multiple shopping facilities at Whetstone High Road.

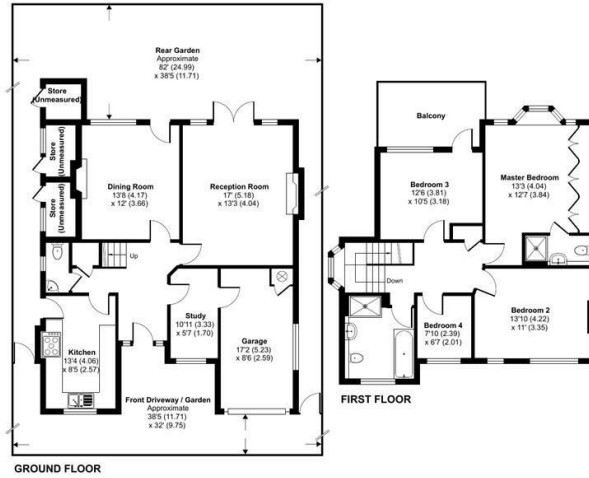
Early viewing is highly recommended. Sole Agent.





## Greenway, London, N20

Approximate Area = 1523 sq ft / 141.4 sq m (excludes store)  
 Garage = 152 sq ft / 14.1 sq m  
 Total = 1675 sq ft / 155.6 sq m  
 For identification only - Not to scale



Certified Property Measurer  
 Floor plan produced in accordance with RICS Property Measurement Standards incorporating International Property Measurement Standards (IPMS Residential). © rinchcom 2024.  
 Produced for Real Estates. REF: 1192813

Energy Efficiency Rating		Current	Potential
Very energy efficient - lower running costs	A		
Energy efficient - lower running costs	B		80
Decent energy efficiency - lower running costs	C		
Some energy efficiency - lower running costs	D	56	
Low energy efficiency - higher running costs	E		
Very low energy efficiency - higher running costs	F		
Least energy efficient - higher running costs	G		

EU Directive



Real EstatesTottenham Office:  
 32 Tottenham Lane  
 Tottenham N20 9QJ

ll : 0208 445 3132  
 e : info@realestates-wsp.co.uk  
 w : www.realestates-wsp.co.uk